

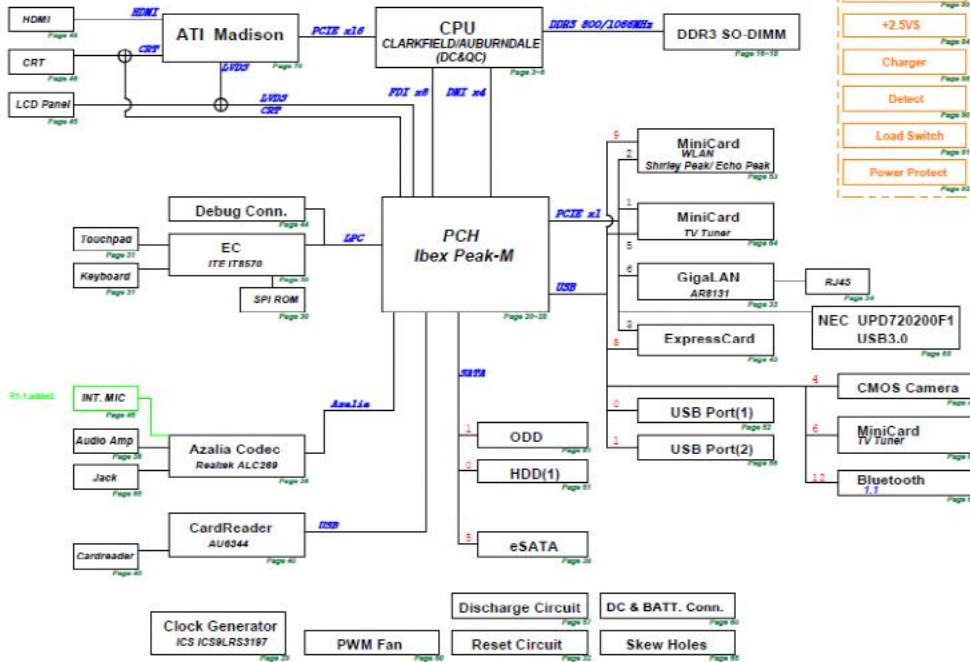
N61JA Repair Guide

2010/01/08
Janmouss_chang
CSC-GRMA

SYSTEM PAGE REF.

N61Ja SCHEMATIC Revision 2.0

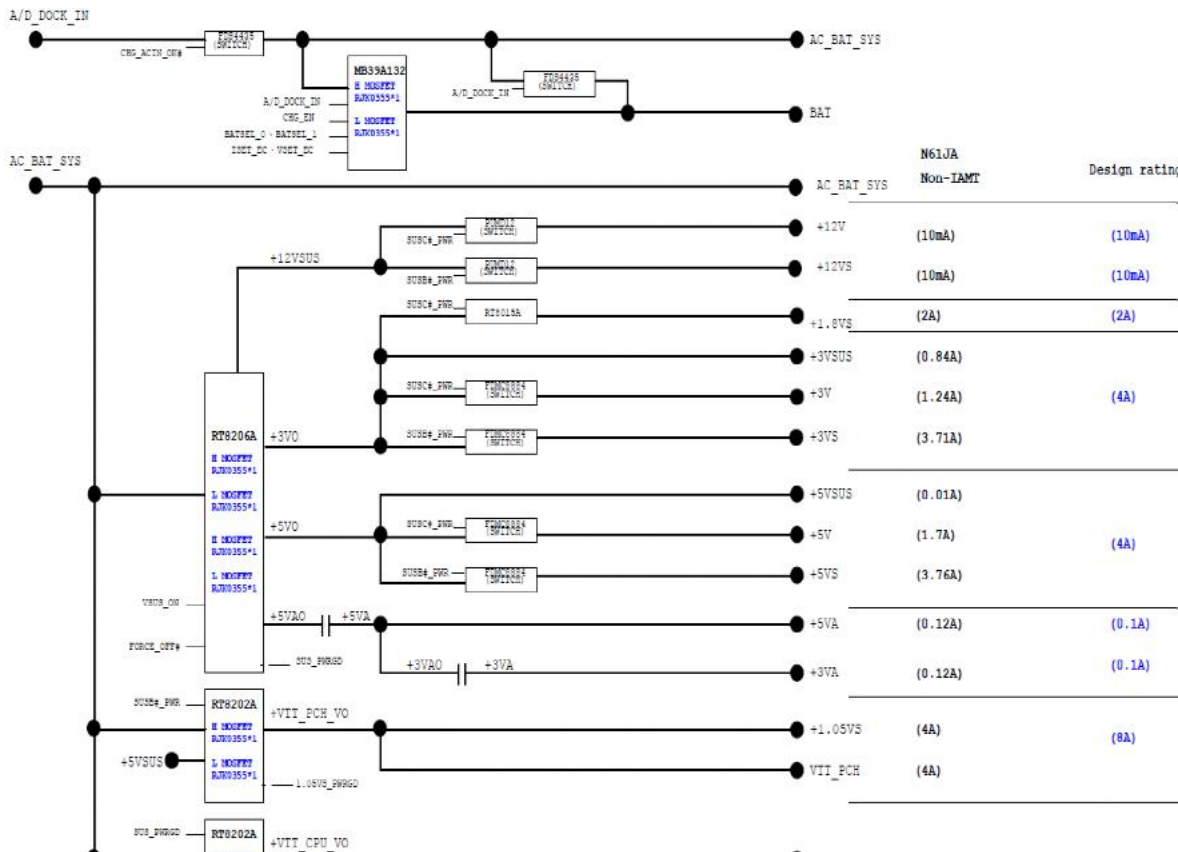
BLOCK DIAGRAM

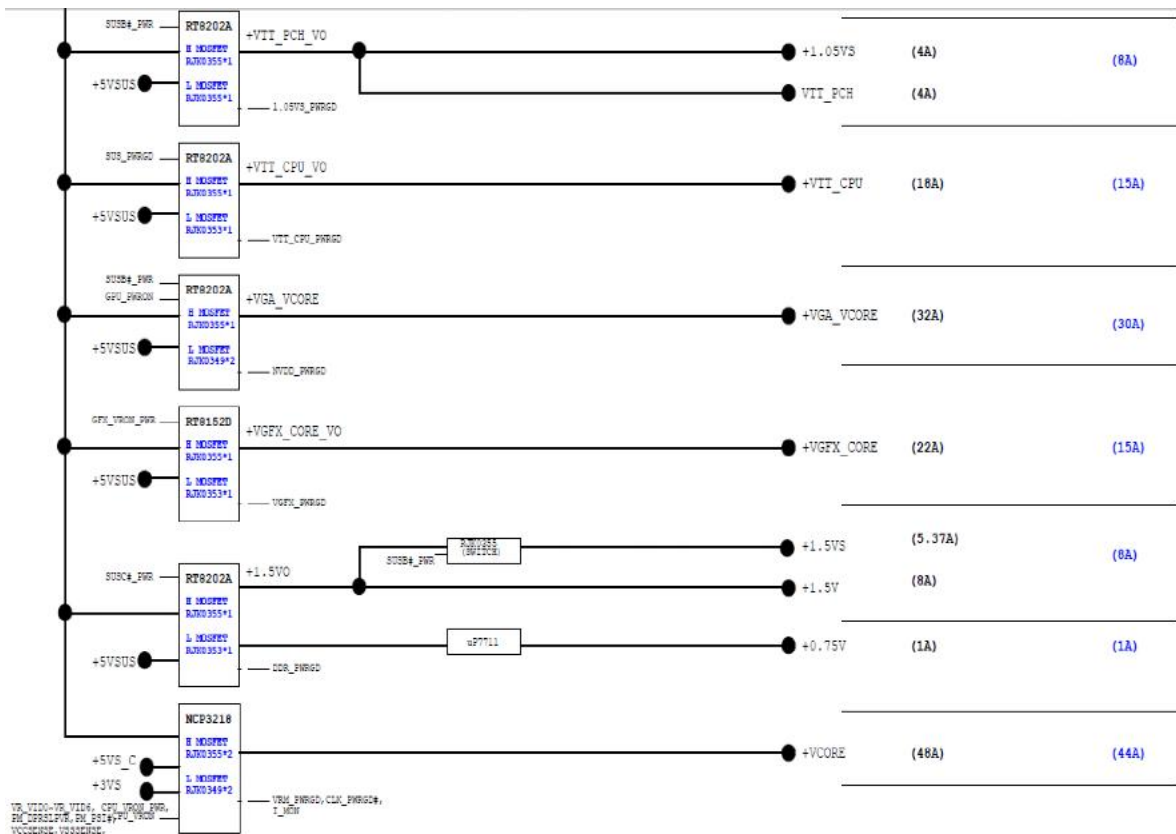


80 PW_VCORE(MAX17044)
81 PW_SYSTEM(MAX17020)
82 PW_I/O_VTT_CPU0+1.1VM
83 PW_I/O_DDR & VTT0 +1.0VS
84 PW_I/O_VIN & ME_VIN+1.0VS
85 PW_VREF_CORE(MAX17025)
86 PW_CHARGER(MAX17015)
87 PW_DETECT
88 PW_LOAD_SWITCH

N61JA Repair Guide

2010/01/08
Janmous_chang
CSC-GRMA



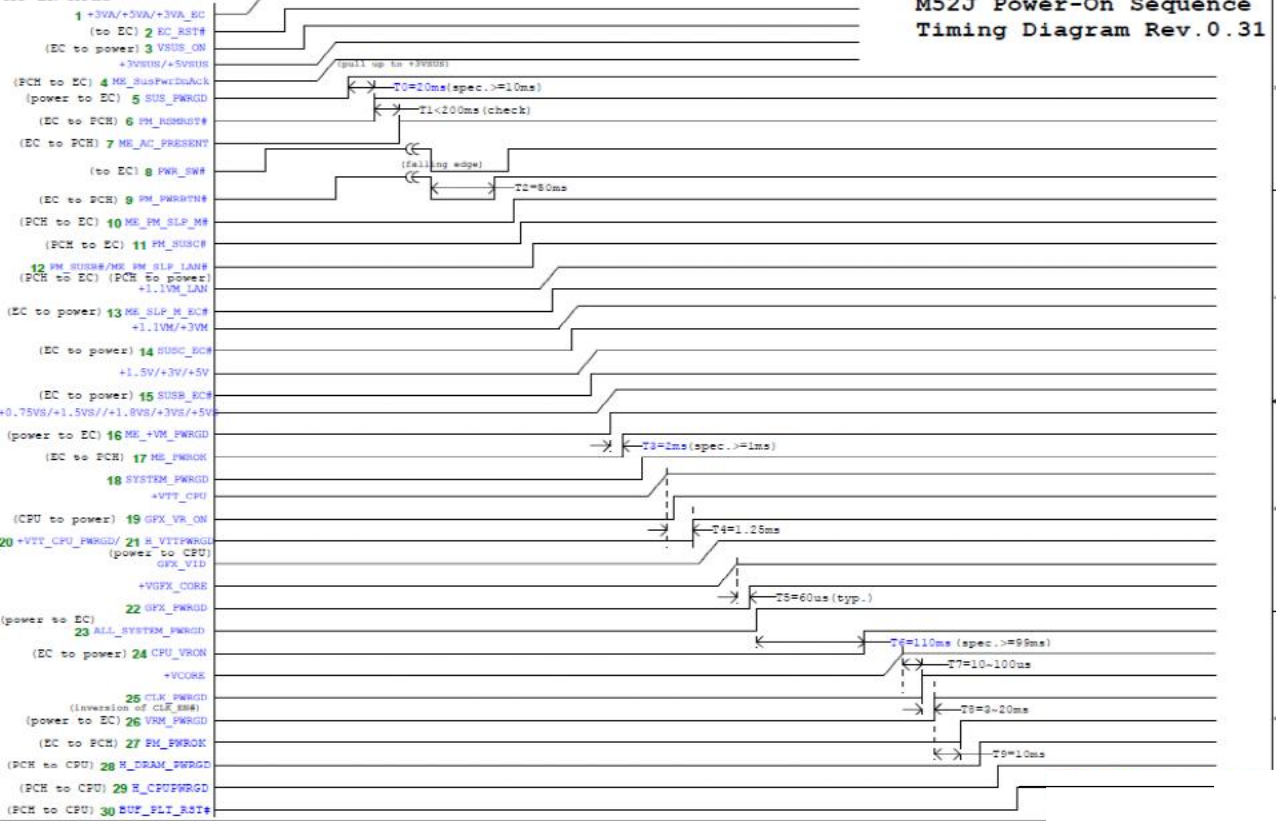


2010/01/08
Janmous_chang
CSC-GRMA

M52J Power On Sequence Diagram Rev. 0.31

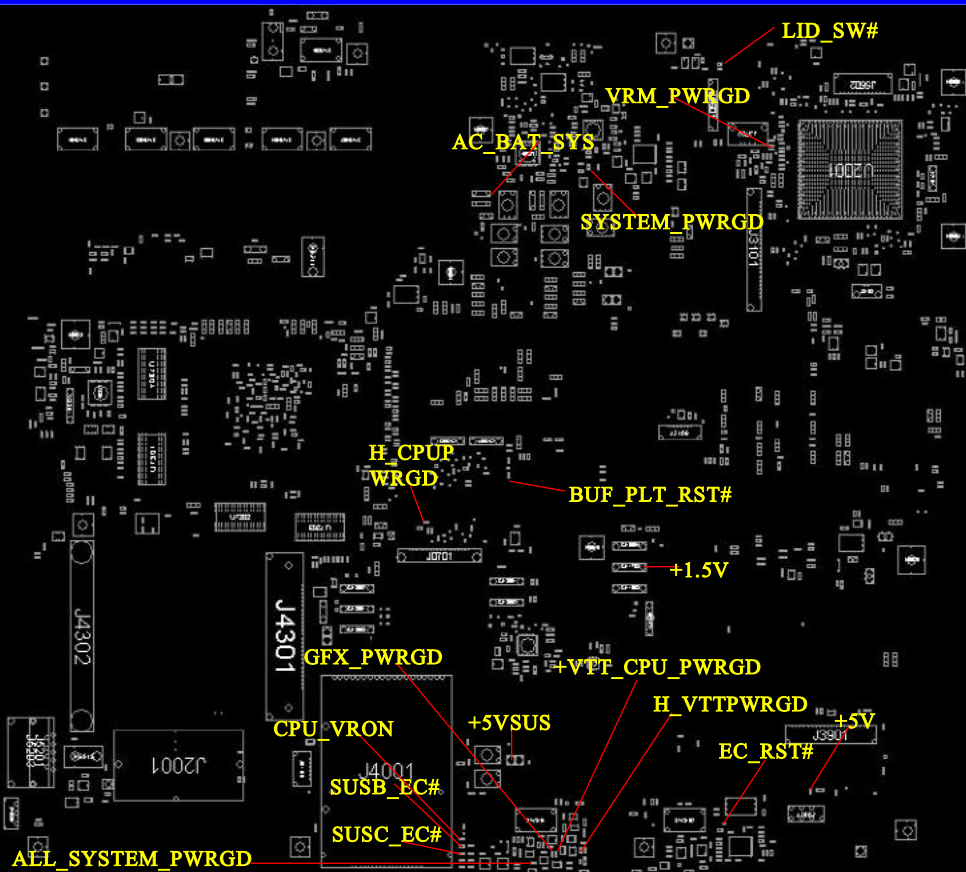


2010/01/08
Janmous_chang
CSC-GRMA

M52J Power-On Sequence
Timing Diagram Rev.0.31

N61JA Repair Guide(Top)

2010/01/08
Janmous_chang
CSC-GRMA



N61JA Repair Guide(Bottom)

2010/01/08
Janmous_chang
CSC-GRMA

